

## Rosemount® Analytical Replacement Sensor Assemblies

- **Improved Life and Performance**

Van London-Phoenix Co. electrode designs have been field proven in a variety of harsh applications and when manufactured with our *Solid Polymer Reference*™ fill the life of the electrode is prolonged and the overall performance of the electrode is enhanced.

- **Quick Order Turn-around**

An inventory stocking arrangement reduces lead times from weeks to days. Housed electrodes generally consist of two parts: a 12mm glass-bodied electrode and a housing machined to accept that electrode. Minimal factory assembly is required before shipment to the customer site.

- **Custom Styles**

Housings can be machined from numerous materials with several electrode guard designs and various insertion depths. Custom electrode designs can maximize sensor life in the harshest of environments.

- **Easy, Low Cost Replacement**

Direct replacements are dimensionally matched to existing equipment so that no expensive retrofit changes are necessary. Simple, quick removal of the replacement element for Van London-Phoenix Co. standardization is all that is required.

- **Reduced Maintenance and Inventory**

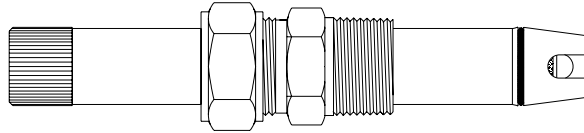
Conversion from Rosemount® Analytical assemblies to Van London-Phoenix Co. designs is quick and inexpensive, and will eliminate costly maintenance and inventory requirements.

## ELECTRODE SELECTION

**Measurement Types:** GXV - Multi Purpose pH glass formulation (0-14.00 pH)  
Antimony - For pH measurements in Hydrofluoric Acid applications (2.00-7.00 pH) (0-80 °C)

**Reference Types:** SPR™ - Double junction, **SOLID POLYMER REFERENCE** (0-130°C)  
Tuff Tip™ - New design incorporating larger reference junction surface area & electrode guard (0-130°C)  
LCJ - Dramatically increases reference junction surface area. Standard material is ceramic but porous Teflon and porous Kynar are available

**Retractable Sensors**



396VP/396R/385/385+/398R

**Disposable Sensor:**

R - 100B - XX QQ - M M \*Titanium Tube with PT100S Temp.Comp.

Tube length in inches (06,16,21 & 36)

**Connector Type**

**H** Hanked (tinned)

**BH** Male BNC & Hanked (tinned)

**Lead Length**

Lead length in even feet

**Rebuildable Sensor:**

A - 300B - XX QQ pH electrode with \*PT100S Temp.Comp.

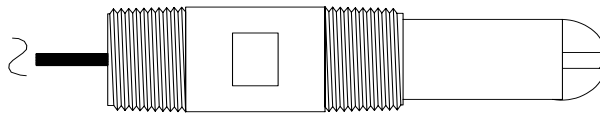
3500720 - MM \*Titanium Tube

1600720 - MM Rear housing for Rebuildable Tube

MM = Tube length in inches (06,16,21 & 36)

**\* 316 Stainless Steel optional**

**1" MPT Sensors**



396VP/396P/389/399/GP1

V - 500B - XX QQ Kynar body with \*PT100

**Lead Length**

Specify lead length in even feet

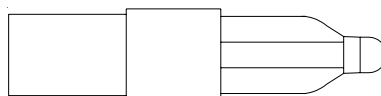
**Connector Type**

**H** Hanked (tinned)

**BH** Male BNC & Hanked (tinned)

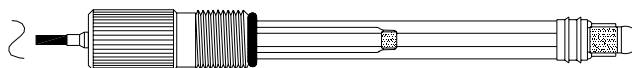
\* Other Temp. Comps. available

**Series III Flow Cell**



R - 4002 Glass mono pH Electrode  
 R - 4001 Reference mono Electrode  
 86A0110 Temp. Comp. PT100S

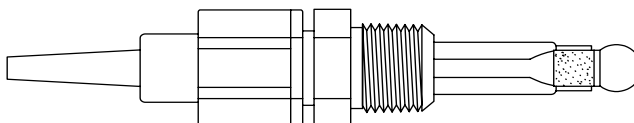
### **381 Flow Cell**



381 Flow Cell

R - 4002	Glass mono pH Electrode
R - 4003	Combination pH Electrode

### **320 Flow Cell**



V - 0010	- XX	QQ	Combination 100mm pH Electrode
	1600705		Kynar gland fitting with dual Viton o-rings

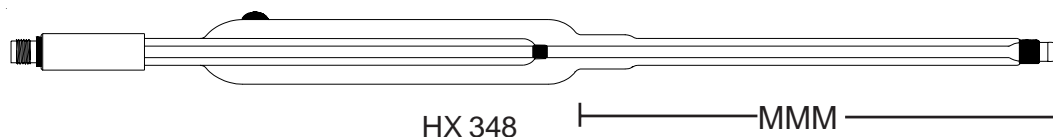
### **Steam Sterilizable & Autoclavable**



371/HX338/370  
(S8 Connector)

I - 100B	- F	MMM	Combination pH electrode with PT100s Temp. Comp.
I - 1000	- S8	MMM	Combination pH electrode without Temp. Comp. & S8 Connector

MMM = Electrode Dimension in millimeters (120, 225, 325, 400 & 425)



I - 2000	- S7-	MMM	Refillable Combo pH electrode 120mm with S7 Connector
I - 3000	- S7-	MMM	Sealed Combo pH electrode 120mm with S7 Connector

MMM = Electrode Dimension in millimeters (120, 150, 200 & 250)

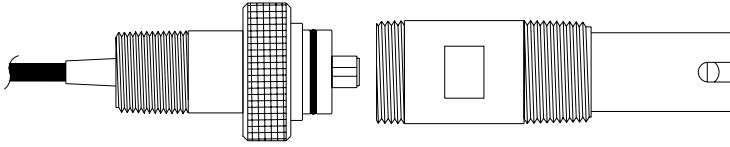
#### Accessories:

1507311	1 1/2" Ball Valve 316 SS
1500143	1" MPT Twist-lock adapter, 316 SS
1600143	1" MPT Twist-lock adapter, Kynar®
1500705	1/2" MPT Gland fitting, 316 SS for 320 Flow cell
1600705	1/2" MPT Gland fitting, Kynar® for 320 Flow cell
3000650	1" MPT Gland fitting, 316 SS for all Retractable styles
86A0110	Temp Comp for Series III (PT100)
3500720	16" Titanium Tube for all Retractable styles
3500720-06	6" Titanium Tube for all Retractable styles
1600720	Rear housing for 16" Retractable
1600720-06	Rear housing for 6" Retractable

## Optional Configurations:

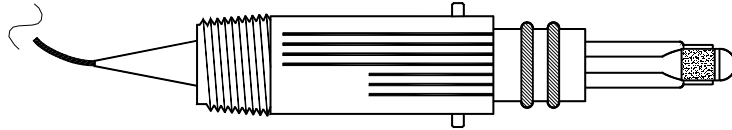
For all 1" MPT designs with  
integral preamp:

### ***Detachable Preamp Design***

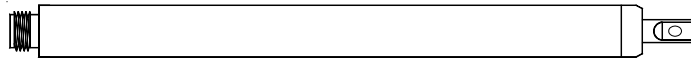


For all 1" MPT designs without  
integral preamp:

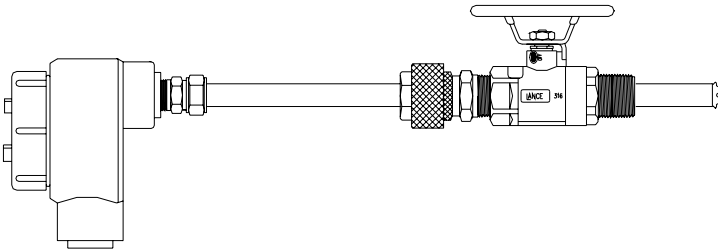
### ***Twist-Lock Design with adapter*** (adapter not shown)



For H x 348: **Solid State  
ISFET Design**



Retractable Design:  
**MK7Z Hot Tap Design**



### ***Materials of Construction:***

**Housing** - Kynar® (standard), PEEK® (optional), 316ss (optional), CPVC (optional)

**O-Rings** - Viton® (standard), EPDM (optional), Kalrez® (optional)

### ***Temperature Compensation:***

**1181pH** - PT100 or 3K Balco - Preamplifier dependent

**2081pH/1054pH/2054pH/Solucomp** - PT100

**3081pH/4081pH/81pH** - PT100

**XMT/54EpH/5081pH/1055pH/PT100**

For Solution Ground / Diagnostics  
consult factory

### **Electrode Solutions**

9210038	4.00pH, 7.00pH and Deionized Water rinse (1 pint each)
9210037	4.00pH, 7.00pH and 10.00pH (1 pint each)
9210039	7.00pH, 10.00pH and Deionized Water rinse (1 pint each)
9210079	Anti-fouling solution to reduce electrode-coating problems
9210008-125	Electrode storage solution KCl/4.00 pH buffer (125 ml)



Please contact our Asia Pacific distributor:

# **H2O Rx**

Phone: 0409 784 236 or 0421 795 353

info@h2orx.com.au

[www.h2orx.com.au](http://www.h2orx.com.au)

Kynar is a trademark of the Penn

Viton is a trademark of E.I. Dupont de Nemours & Company

[RosemountRep.pmd]