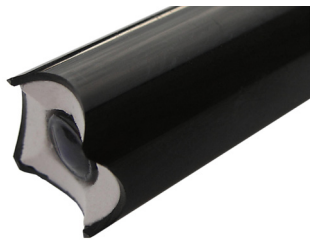


TUFF-TIP® COMBINATION pH ELECTRODE

12/09



6103 GLENMONT • HOUSTON, TEXAS • 77081
800/522-7920 • FAX 713/772-4671 • 713/772-6641
www.VL-PC.com



The new Van London-pHoenix Co. *Tuff-Tip*® electrode encompasses the latest design in sensor technology. The *Tuff-Tip*® probe is constructed with the novel *Magna-Sens* reference junction and a rugged pH bulb protected by the unique *Tuff-Tip*® shape.

The large annular ceramic *Magna-Sens* reference junction and cross linked polymer gel is resistant to fouling even in harsh and dirty samples. The *Tuff-Tip*® is a robust alternative to the conventional laboratory electrodes where membrane breakage is a problem. It is also easy to clean with less carry over between samples.

The *Tuff-Tip*® is compatible with almost all pH meters.

Features

- Rugged pH Tip
- Easy to Clean
- Fast Response
- Non-Clogging Reference Junction
- Seal Cross Linked Polymer Reference

Specifications

- pH Range: 0 to 13 pH
- Temperature Range: -5°C to 100°C

Part No.

5733534-003A
5733534-003B
5733534-003C
5733534-003I
5733734-003A
5733734-003B
5733734-003C
5733734-003I

Reference

Single Junction
Single Junction
Single Junction
Single Junction
Double Junction
Double Junction
Double Junction
Double Junction

Lead Length

Three Foot Cable
Three Foot Cable
Three Foot Cable
Three Foot Cable
Three Foot Cable
Three Foot Cable
Three Foot Cable
Three Foot Cable

Connector

US Standard
BNC
Radiometer
DIN
US Standard
BNC
Radiometer
DIN

Longer electrode cables and detachable leads are available on special request.



Please contact our Asia Pacific distributor:

H2O Rx

Phone: 0409 784 236 or 0421 795 353

info@h2orx.com.au

www.h2orx.com.au